

Pediatric Asthma Guideline Checklist

Health Delivery System-
Level 2



The current state of the issue

Asthma is the most common chronic disease among children, with many potential risk factors including smoking, obesity, family history, and environmental triggers, and adverse childhood experiences.^{1,2} In Washington state nearly 120,000 children have been diagnosed with asthma, accounting for between 8 to 11 percent of children in middle and high school.³ Over one year in Washington state, 28% of youth with asthma lacked routine healthcare visits, and one in five youth with asthma visited an emergency room to manage asthma symptoms.⁴ Poor control of pediatric asthma can lead to chronic absenteeism and affect the academic success of children. Frequently, the burden of asthma in the United States falls disproportionately on Black, Hispanic, and American Indian/Alaskan Native people.⁵ Asthma is a long-term disease that cannot be cured but can be effectively managed through guidelines-based treatment and mitigation plans.

Clinical Setting

- ☐ Develop a population health strategy for managing pediatric asthma that includes automated event notification, care coordination, and a registry of pediatric asthma patients.
 - ☐ Outreach to patients with persistent asthma for annual asthma preventive visits.
 - ☐ Implement automated event notification systems for patients diagnosed with asthma when admitted to the emergency room, urgent care, or inpatient hospitalization.
 - ☐ Implement clinic-based care coordination for pediatric asthma patients' clinical needs.
 - ☐ Ensure alignment and communication across care coordination provided in other settings.
- ☐ Develop metrics for asthma control quality.
 - ☐ Track and measure asthma prevalence and stratify by severity and control.
 - ☐ Track severity and control using ICD-10 codes.

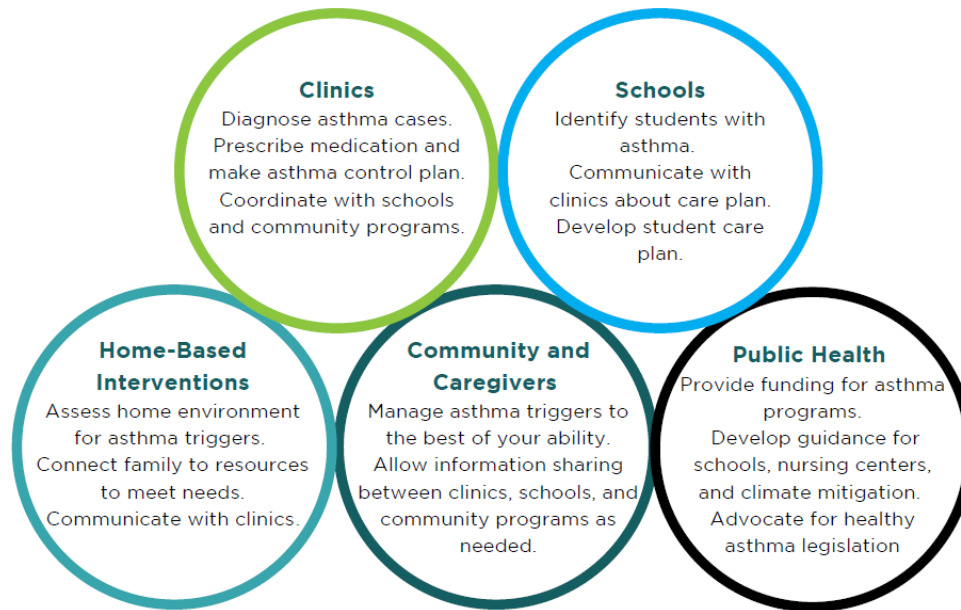
Home Environment

- ☐ Implement [social needs screening](#) and [interventions](#) in the clinical setting

Climate and Environment

- ☐ Use environmentally friendly, EPA-approved disinfectants for cleaning

Model for communication across health care stakeholders



Resources

- The Bree Report on Pediatric Asthma is meant to supplement these resources.
- Full Bree Report on Pediatric Asthma: <https://www.qualityhealth.org/bree/wp-content/uploads/sites/8/2023/01/Bree-Pediatric-Asthma-Report-Final.pdf>
- National Asthma Education and Prevention Program: <https://www.nhlbi.nih.gov/science/national-asthma-education-and-prevention-program-coordinating-committee-naeppcc>
- CDC's Community Preventative Service Task Force-Asthma Control: <https://www.thecommunityguide.org/media/pdf/Asthma-Home-Based-Children.pdf>
- Washington State's Asthma Management in Educational Settings Guide: <https://ospi.k12.wa.us/sites/default/files/public/healthservices/pubdocs/asthmamanual.pdf>
- Asthma and Allergy Foundation of America: <https://aafa.org/asthma-allergy-research/our-research/climate-health/>

Read the full Bree Report on Pediatric Asthma online by scanning the QR code:



Connect with the Bree Collaborative at bree@qualityhealth.org